



Call for Price

3 Elevations Available

 1,619+ Sq. Ft.

 3 Bedrooms

 2.5 Bathrooms

Our Roshambo Collection takes us back to a time when all scores could be settled with a game of Rock - Paper - Scissors. This Paper plan covers Rock proving sometimes a more elegant approach to life wins over something that feels both hard and forced. Paper offers an open expanse on the first floor anchored by a well appointed kitchen complete with space for everyone at the oversized island. A cozy space in the front and a larger space toward the rear of the home offer flexibility and personalization so home is truly a reflection of who lives there. Upstairs a primary suite is generously sized for rest, reflection and relaxation. Two equally sized secondary bedrooms and a hall bath settle the score on who's room is bigger. No game of Rock-Paper-Scissors needed. This Paper takes it all.



A



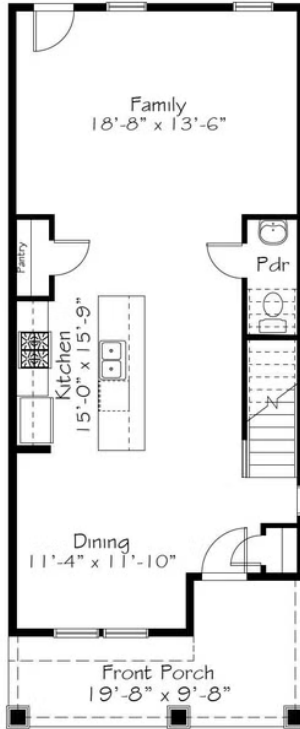
B



D

All square footage is approximate. Renderings are artist's conceptions and may vary slightly from the actual home. Homes may be built in reverse of plans shown, depending on site conditions. Minor architectural changes may be made occasionally at the option of the builder. Please contact your Sales Consultant for details.

First Floor



Second Floor

